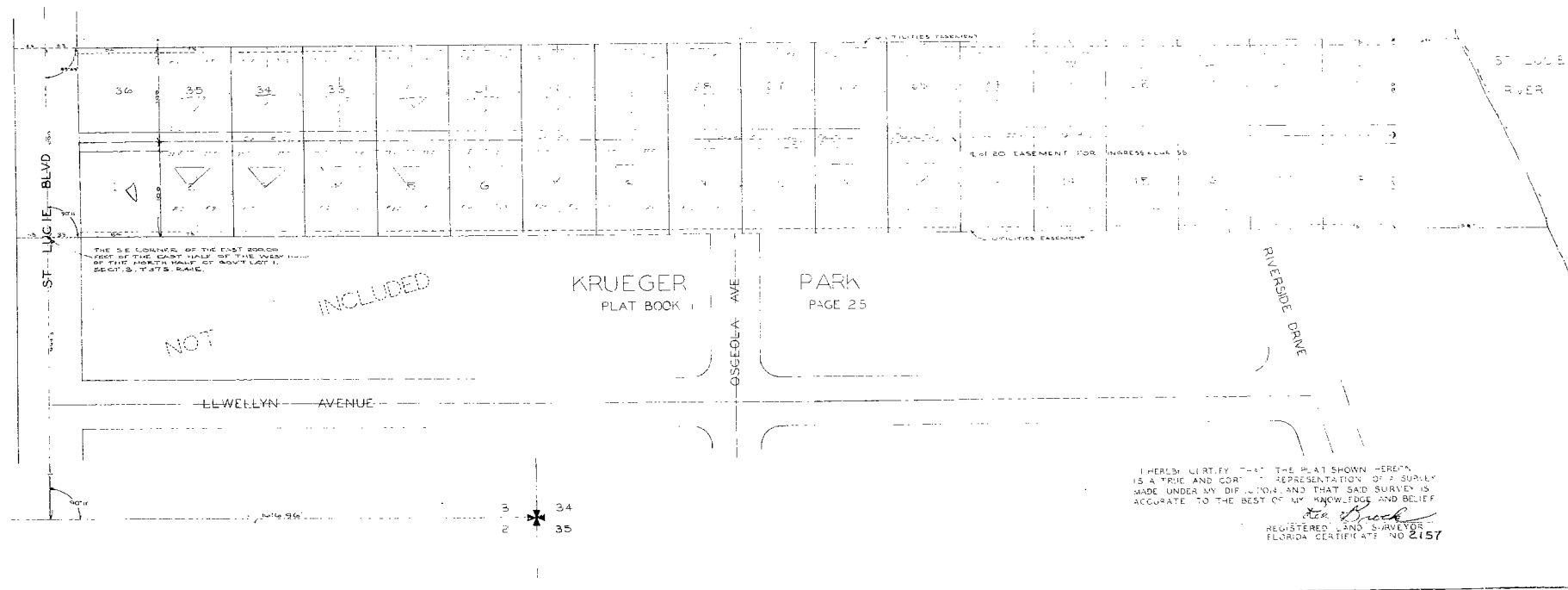
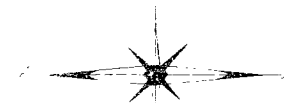


FISHERMAN'S PARADISE

A SUBDIVISION OF THE EAST 200 FEET OF THE EAST HALF OF THE WEST HALF OF THE NORTH 1/2 OF GOV'T LOT 1, SECTION 3 TWP 38S, R 6E 41E, ALL IN

MARTIN COUNTY FLORIDA



24:1